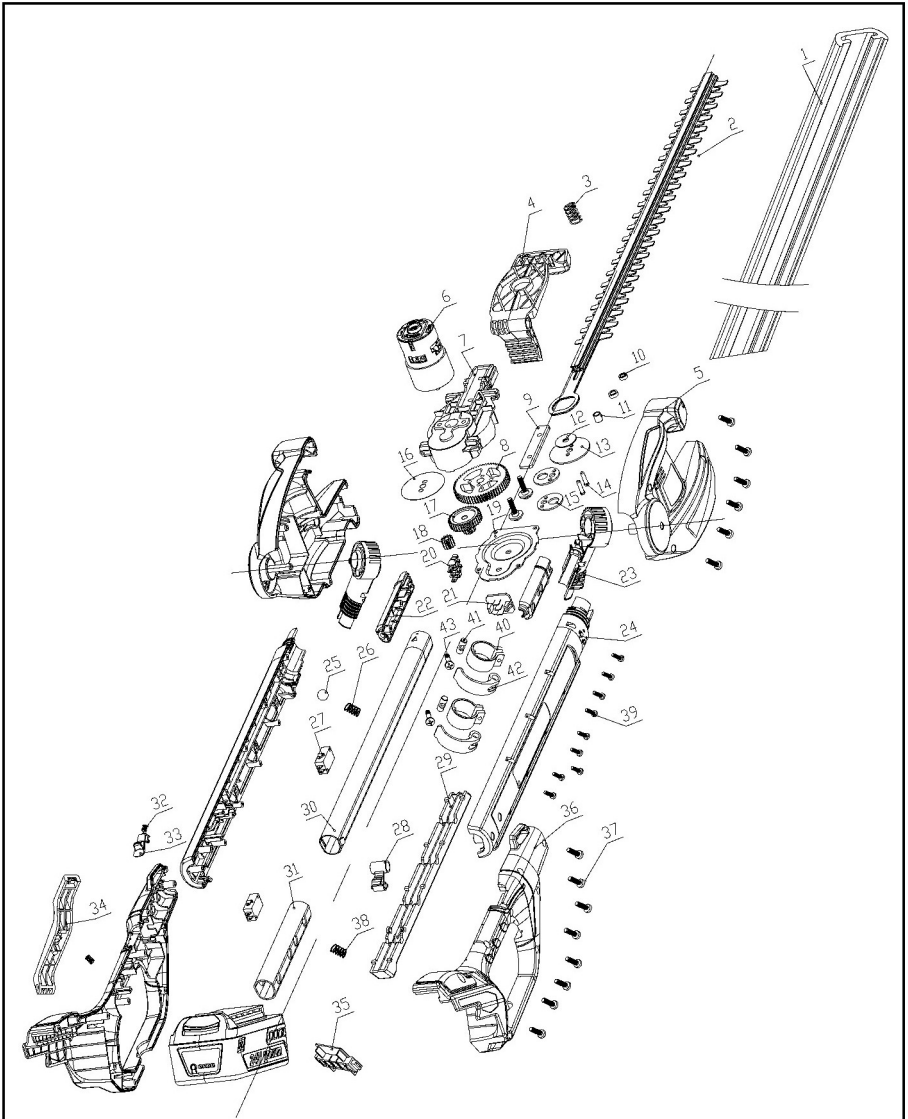


EXPLODED VIEW



PARTS LIST

ITEM NO.	PART NO.	DESCRIPTION	QTY
1	34110648	Blade cover	1
2	33101883-2	Blade assy	1
3	33402161-1	Spring	1
4	34105648-1	Rotating handle	1
5	31101648	Motor housing assy	1
6	36103459	Motor	1
7	34111459-1	Gear box	1
8	33200451	Gear	1
9	33306459	Pressing board	1
10	33202453	Shaft cover2	1
11	33902459	Shaft cover3	1
12	33302453	Small washer	1
13	33301453	Big washer	1
14	33203161	Pin	2
15	33304453-1	Eccentric block	2
16	33305453	Spacing block	1
17	33201451-1	Dual gear	1
18	33202451	Pinion	1
19	33303453	Gear box cover	1
20	33314470	Female insert	3
21	34106646	Male plug	1
22	34107646/34108646	L/R female plug	1
23	31102648	Rotating assy	1
24	34102646/34103646	L/R aulsiliary handle	1
25	33201648	Steel ball	1
26	33902648	Spring	1
27	36301454-2	Switch	2
28	34105646	Eccentric knob	1
29	34104646	Switch trigger	1
30	33102646	Guide tube	1
31	33101646	Connection tube	1
32	3340287	Spring	2
33	34113505-1	Anti-lock off button	1
34	34121708	Switch button	1
35	34106978	Motor housing insert board	1
36	31103648	Handle assy	1
37	32201517	Nut	26
38	33201646	Trigonal spring	1
39	32201715	Screw	9
40	33302646	Clamp tube	2
41	33203334	Fixing shaft	2
42	33104505	Wrench	2
43	33202648	M5/bolt	2